

# Grant County Communication Arts Day

April 21st at 2:00 pm  
Youth & Ag Center, Lancaster

The arts are for anyone! No matter your grade level or interest, there is something for you to try and learn through the 4-H Arts. The goal of the 4-H Communication Arts Day is to give youth (5K-13th Grade) an opportunity to express their creativity, while also developing skills in a supportive and encouraging environment.

The 4-H Communication Arts Day Contest will have seven divisions.

- ◆ VOCAL
- ◆ SPEAKING
- ◆ ARTS & CRAFTS
- ◆ INSTRUMENTAL
- ◆ DEMONSTRATION
- ◆ PHOTOGRAPHY
- ◆ DANCE

All performance and exhibits must have been performed, completed or taken after October 1, 2023. Entries in Vocal, Instrumental, Dance, Speaking and Demonstrations are eligible for fair premiums. Arts & Crafts and Photography exhibits will be ribbon only and eligible for peer choice awards. Cloverbuds will be celebrated for their participation receiving age appropriate ribbon and premium in eligible divisions.

Members must be enrolled in the 4-H project they are exhibiting in before April 1, 2024. A \$4 Grant County Junior Fair Exhibitor fee will be required for those who enter the Vocal, Instrumental, Dance, Speaking and Demonstration divisions. This fee will cover the exhibitor fee for that 4-H member.

Cloverbuds can bring a total of 4 entries for the day, but no more than 2 entries from the same division. Members grades 3 and over can bring a total of 7 entries for the day, but no more than 2 entries from the same division.

Entry forms and fee can be dropped off at the Extension Office by **April 5 by 4:00 pm** or postmarked on or before April 5. Mail entry forms and fees to the Grant County Extension Office at 916 E Elm Street, Suite A, Lancaster, WI 53813. A full list of rules, class listings and entry forms can be found online at <http://grant.extension.wisc.edu>

If you have questions, please call Grant County Extension Office: 608-723-2125.

Divisions are listed on the next page.

# Communication Arts Day Divisions

## **VOCAL DIVISION:**

A vocal performance is singing with or without accompaniment, and with or without costuming. Participants may perform as a solo, duet or small group ensembles. Performances are limited to 3 minutes and 30 seconds. Limit of 2 entries. Options are:

- Solo Vocal Performance
- Duet Vocal Performance
- Small Group Vocal Performance

## **INSTRUMENTAL DIVISION:**

An instrument performance is an instrumentalist(s) playing standard musical instruments, with or without costuming or staging. Participants may perform as a solo, duet or small group ensembles. Performances are limited to 3 minutes and 30 seconds. Limit of 2 entries. Options are:

- Solo Instrumental Performance
- Duet Instrumental Performance
- Small Group Instrumental Performance

## **DANCE DIVISION:**

A dance performance is a dancer(s) doing body movements set to music. Participants may perform as a solo, duet or small group. Performances are limited to 3 minutes and 30 seconds. Options are:

- Individual Dance
- Team Dance

## **SPEAKING DIVISION:**

A speaking performance is any prose, poetry or traditional speech, whether presented as memorized or interpretive reading. Performances are limited to 2-5 minutes. Options are:

**Prose/Poetry** – Options include: prose reading, poetry reading, a memorized piece, storytelling (where the story is told and not read), or an interpretive speech (a speech that had originally been written and presented by someone else). You may edit your selection to meet the time requirement. Original poetry or stories can also be used. Presentations will be critiqued on use of introduction, voice, expression and appropriateness of material. You should prepare an introduction that includes credit to the author(s) and any transitions that are needed if you have more than one piece. NO props or costumes are permitted.

**Traditional Speech** – Pick a topic of your choice and write an original, factual speech about it. This could be about a 4-H project you love or a current issue you are concerned about. Your speech could inform, persuade, or motivate your audience. You may use note cards during your presentation, but do not read your speech from your notes. You may also use visuals (posters, charts, diagrams, power point) to help you deliver your speech, but NOT props or costumes. (Keep in mind, this is a speech, not a demonstration.)

## **DEMONSTRATION DIVISION:**

A demonstration shows the audience several steps in a process and may be performed individually or with another youth as a team. Demonstrations are limited to 5 minutes. Options are:

- Individual Demonstration
- Team Demonstration

## **ARTS & CRAFTS DIVISION:**

This division includes any visual artwork, including drawing, painting, sculpture, and crafts. All art, drawing and painting must be original work. Crafts can use a pattern or kit. Exhibits must be matted, framed, or otherwise ready for display. Exhibits should be labeled with name, club, grade. Limit of 2 entries. Options are:

- 2D - drawing, painting and flat artwork
- 3D - sculpture, crafts and other 3 dimensional artwork

## **PHOTOGRAPHY DIVISION:**

This division includes any digital photo (color or black & white) taken by the youth. Photos must have been taken after October 1, 2023. Limit to 2 photo entries.

# Communication Arts Day

- Information on how to choose Department, Class and Lot -

## Vocal / Instrumental / Dance / Demonstration / Speaking

Cloverbuds = Youth in grades 5K, 1st or 2nd

**All cloverbuds will list Department 17**

Vocal / Instrumental / Dance = Class 4

Demonstration = Class 5

Speaking = Class 6

Lots depend on the specific description. See next page for lot breakdown.

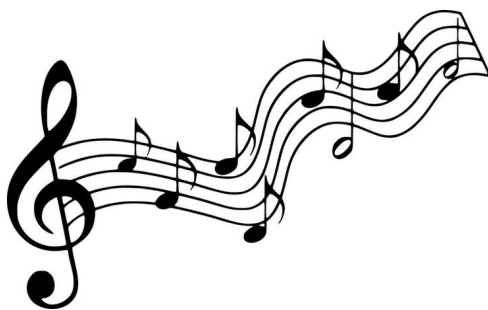
**Participants in grades 3rd and over will list:**

Vocal / Instrumental / Dance = Department 18, Class 12

Demonstration = Department 31, Class 11 or 12

Speaking = Department 31, Class 13 or 14

Lots depend on the specific description. See next page for lot breakdown



For a complete listing of rules, information and the Grant County Fairbook, visit <https://funonforty.co.grant.wi.gov/>

### Information regarding entries

- Remittance of \$4.00 for exhibitor's season ticket must accompany entry blank.
- All performances, including songs, jokes, movements, props, dress, etc. should be in good 4-H taste. No references to alcohol or drugs can be used. As in all 4-H events, good sportsmanship and support of others is expected.

**Department, Class and Lot Information  
for Cloverbuds  
(5K, 1st & 2nd Grades)**

**DEPARTMENT 17 - CLOVERBUDS  
CLASS 4 - VOCAL, INSTRUMENTAL & DANCE  
(Grades 5k – 2)**

**RULES TO ENTER CLASS 4**

- Cloverbuds can bring a total of 4 entries for the day, but no more than 2 entries from the same division.
- Accompanists for any musical solo or ensemble can be a person or recorded. Recorded accompaniment with background vocals are not permitted.
- Pantomiming or lip synching to tapes, CD or DVD's, karaoke or background singing does not give an opportunity for musical expression on the part of participants. It is not permitted. Only 1 vocal, 1 instrumental and 1 dance.
- To keep the selection shorter, excerpts may be taken from longer pieces, one movement may be done or repeats may be eliminated.

**PREMIUMS**

RIBBON - \$1.00 for each exhibit.

**Lot Numbers**

1. Vocal solo
2. Vocal duet
3. Small group vocal performance
4. Instrumental solo
5. Instrumental duet
6. Small group instrumental performance
7. Individual Dance
8. Duet Dance (2 dancers)
9. Team Dance (3+ dancers)

**DEPARTMENT 17 - CLOVERBUDS  
CLASS 5 – DEMONSTRATIONS  
(Grades 5K – 2)**

**RULES TO ENTER CLASS 5**

- 4-H members may select any project or activity as a subject for a demonstration.
- For Communication Arts Day Event: Cloverbuds can bring a total of 4 entries for the day, but no more than 2 entries from the same division. Divisions are Vocal, Instrumental, Dance, Demonstrations, Speaking, Arts & Crafts and Photography.
- Demonstrations should be no more than 5 minutes.

**PREMIUMS**

RIBBON - \$1.00 for each exhibit.

**Lot Numbers**

1. Individual Demonstration
2. Team Demonstration

**DEPARTMENT 17– CLOVERBUDS  
CLASS 6 – SPEAKING  
(Grades 5K – 2)**

**RULES TO ENTER CLASS 6**

- 4-H members may select any project or activity as a subject for speaking.
- Cloverbuds can bring a total of 4 entries for the day, but no more than 2 entries from the same division. Divisions are vocal, instrumental, dance, demonstrations, speaking, arts & crafts and photography.
- Performances are limited to 2-5 minutes.

**PREMIUMS**

RIBBON - \$1.00 for each exhibit.

RECOMMENDED TIME IS LESS THAN 3 MINUTES

**Lot Numbers**

1. 4-H Pledge
2. Prose/Poetry
3. Original Speech

**Information regarding entries**

- Remittance of \$4.00 for exhibitor's season ticket must accompany entry blank.
- All performances, including songs, jokes, movements, props, dress, etc. should be in good 4-H taste. No references to alcohol or drugs can be used. As in all 4-H events, good sportsmanship and support of others is expected.
- For a complete listing of rules, information and the Grant County Fairbook, visit <https://funonforty.co.grant.wi.gov/>

## Department, Class and Lot Information for Grades 3 & Over

### DEPARTMENT 31 DEMONSTRATIONS

- 4-H members may select any project or activity as a subject for a demonstration.
- Members grades 3 and over can bring a total of 7 entries for the day, but no more than 2 entries from the same division. Divisions are Vocal, Instrumental, Dance, Demonstrations, Speaking, Arts & Crafts and Photography.
- Some Grant County 4-H clubs require members to present a demonstration on a club level in order to compete on the county level. Members need to check with their main leader before entering.
- Demonstrations should be no more than 5 minutes.

#### CLASS 11 - OPEN TO GRADE 3-7

Lot No.

1. Individual Demonstration
2. Team Demonstration

#### CLASS 12 - OPEN TO GRADE 8 & OVER

Lot No.

3. Individual Demonstration
4. Team Demonstration

### DEPARTMENT 31 SPEAKING

- 4-H members may select any project or activity as a subject for speaking.
- Members grades 3 and over can bring a total of 7 entries for the day, but no more than 2 entries from the same division. Divisions are vocal, instrumental, dance, demonstrations, speaking, arts & crafts and photography.
- Performances are limited to 2-5 minutes.

#### CLASS 13 - GRADES 3-7

RECOMMENDED TIME LIMIT IS 2-5 MINUTES

Lot No.

1. Prose or Poetry
2. Traditional Speech

#### CLASS 14 - GRADES 8 & OVER

RECOMMENDED TIME LIMIT IS 5-8 MINUTES

Lot No.

3. Prose or Poetry
4. Traditional Speech

### DEPARTMENT 18

#### CLASS 12 - VOCAL, INSTRUMENTAL & DANCE

- Open to members enrolled in Music and Dance
- Limit of 2 entries in each Vocal, Instrumental, and Dance Division
- For Communication Arts Day Event: Members grades 3 and over can bring a total of 7 entries for the day, but no more than 2 entries from the same division. Divisions are Vocal, Instrumental, Dance, Demonstrations, Speaking, Arts & Crafts and Photography
- Accompanists for any musical solo or ensemble can be a person or recorded. Recorded accompaniment with background vocals are not permitted.
- Pantomiming or lip synching to tapes, CD or DVS's, karaoke or background singing does not give an opportunity for musical expression on the part of participants. It is not permitted. Only 1 vocal, 1 instrumental and 1 dance.
- To keep the selection shorter, excerpts may be taken from longer pieces, one movement may be done or repeats may be eliminated.

#### CLASS 12 – MEMBERS IN GRADES 3-5

Lot No.

1. Vocal solo
2. Vocal duet
3. Small group vocal performance
4. Instrumental solo
5. Instrumental duet
6. Small group instrumental performance
7. Individual Dance
8. Duet Dance (2 dancers)
9. Team Dance (3+ dancers)

#### CLASS 12 – MEMBERS IN GRADES 6-8

Lot No.

10. Vocal solo
11. Vocal duet
12. Small group vocal performance
13. Instrumental solo
14. Instrumental duet
15. Small group instrumental performance
16. Individual Dance
17. Duet Dance (2 dancers)
18. Team Dance (3+ dancers)

#### CLASS 12 – MEMBERS IN GRADES 9 & OVER

Lot No.

19. Vocal solo
20. Vocal duet
21. Small group vocal performance
22. Instrumental solo
23. Instrumental duet
24. Small group instrumental performance
25. Individual Dance
26. Duet Dance (2 dancers)
27. Team Dance (3+ dancers)

# JUNIOR CLASS ENTRY FORM—DUE April 5 by 4:00 pm

GRANT COUNTY FAIR, LANCASTER, WISCONSIN

AUGUST 11-18, 2024

Grade as of Jan. 1<sup>st</sup>, 2024 \_\_\_\_\_

NAME \_\_\_\_\_ ADDRESS \_\_\_\_\_ PHONE \_\_\_\_\_

CITY \_\_\_\_\_ STATE \_\_\_\_\_ ZIP \_\_\_\_\_ CLUB NAME \_\_\_\_\_

Email Address \_\_\_\_\_

**Communication Arts Day – April 21st, 2024 @ 2:00 pm,**

Youth & Ag Center, 916 E. Elm St., Lancaster

See previous pages for department,  
class and lot information.

Vocal / Instrumental / Dance / Speaking / Demonstration Entry Form

DEPT.	CLASS	LOT	DESCRIPTION	Selection Title	Fee
					0
					0
					0
					0
					0
					0
					0
<i>(only \$4.00 per exhibitor, not per exhibit entered)</i> EXHIBITOR TICKET:					<b>\$4.00</b>

Arts & Crafts / Photography Entry Form

Please check one Division (Arts & Crafts or Photography) per exhibit and list if 2D or 3D in Arts & Crafts Division.

Arts & Crafts <i>(note if 2D or 3D)</i>	Photography	Description	Current Grade
<i>no charge for Arts &amp; Crafts or Photography entries during this event</i>			<b>No Charge</b>

*Use additional forms if needed.*

By signing this you agree to the following; I have read & understand the IAFE National Code of Show Ring Ethics and the Grant County Fair Code of Conduct Addendums to the code and I agree to abide by these rules in all departments

EXHIBITOR: \_\_\_\_\_

PARENT or GUARDIAN: \_\_\_\_\_

Return to: Grant County Extension Office, 916 E. Elm Street Suite A, Lancaster, WI 53813